

3D-A1000 DIMENSIONING SYSTEM

Fast, accurate, and intuitive dimensioning technology

The 3D-A1000 dimensioning system is a compact and industrial 3D + 2D motion-capable smart camera used for dimensioning both regular and irregularly-shaped items. Patented 3D technology combined with 2D inspection capabilities delivers precision at high speed. The 3D-A1000 provides reliable and effective results without any complicated setup or maintenance.

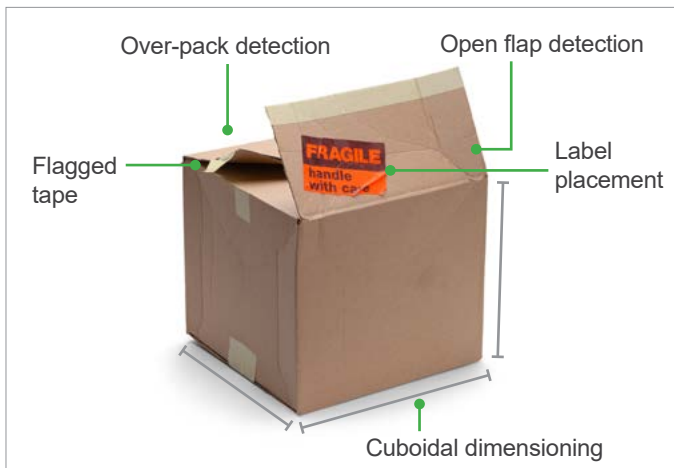
- Estimate shipping costs
- Optimize storage density
- Track registered goods
- Sort products efficiently
- Recover lost revenue
- Eliminate manual dimensioning



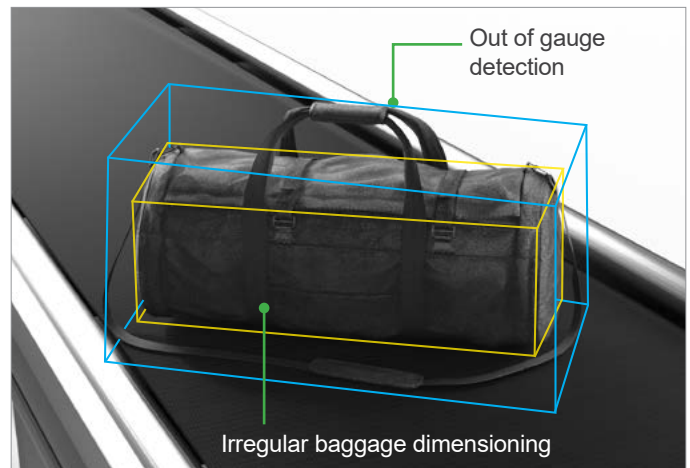
L: 579 mm
W: 348 mm
H: 462 mm



Distribution & Warehousing



Airport Baggage Handling

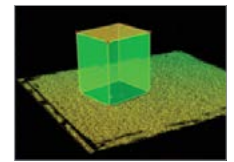


3D + 2D technology provides functionality beyond dimensioning

Unlike conventional methods, the 3D-A1000 uses patented 3D symbolic light technology to freeze motion with a single image. This generates more accurate 3D point cloud data, eliminating the need for complex calibration and encoder integration. Embedded processing enables use of powerful Cognex vision tools to run additional 3D + 2D inspections.



3D symbolic light



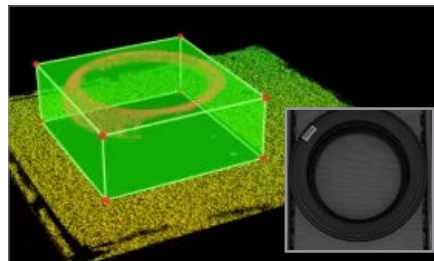
3D point cloud



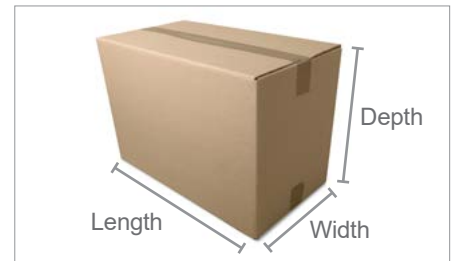
2D image



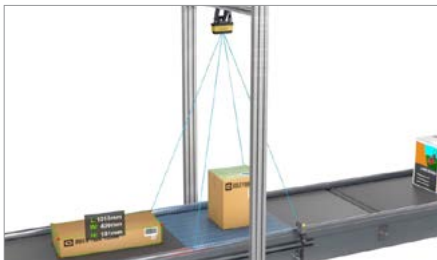
Plug and play factory-calibrated system



3D point cloud profile data, calibrated to 2D image data



<5 mm (0.2") dimensional accuracy on cuboidal and irregular objects



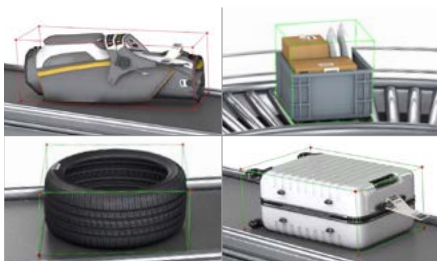
Instant in-motion snapshot technology (no encoder required)



Add powerful Cognex vision tools to run additional 3D + 2D inspections



Unaffected by uneven transitions, speed changes, or curved conveyance



Superior performance on difficult target surfaces



Application assistance and performance feedback



Seamless barcode tunnel integration with DataMan® Multi-Reader Sync™

Out of the box ready with easy integration and maintenance

The 3D-A1000 is factory calibrated and ready for system integration immediately. Unlike conventional systems that can take a skilled engineer 3 to 6 hours to install and calibrate, the 3D-A1000 can be installed by anyone in under 15 minutes, using an intuitive setup wizard.



Step 1. Connect without the hassle of software downloads and installation procedures.



Step 2. Intuitive wizard simulates the installation environment to assist with mounting and optimization.







Step 3. In under 15 minutes, the system is ready to run and auto-certify with performance analysis tools.



Step 4. Once installed, continued feedback provides statistical insight into production and processes for data-driven optimization.

3D-A1000



-  Small footprint for easy integration
-  Anyone can set up in **<15 minutes**
-  Factory calibrated
-  Automated verification

Conventional System

-  Bulky installation
-  Takes a skilled engineer **3–6 hours** to set up
-  Requires complex calibration procedure
-  Manual, unreliable testing

Powerful and compact turnkey system

Indicator LEDs

2D imager

In-motion 3D imager

Discrete I/O (for pass/fail limits and speed tracking)

Gigabit Ethernet with Industrial Protocol support

Embedded processing with no moving parts, using proven Cognex vision tools

Multi-Reader Sync

High-powered 3D integrated and 2D external lighting options available

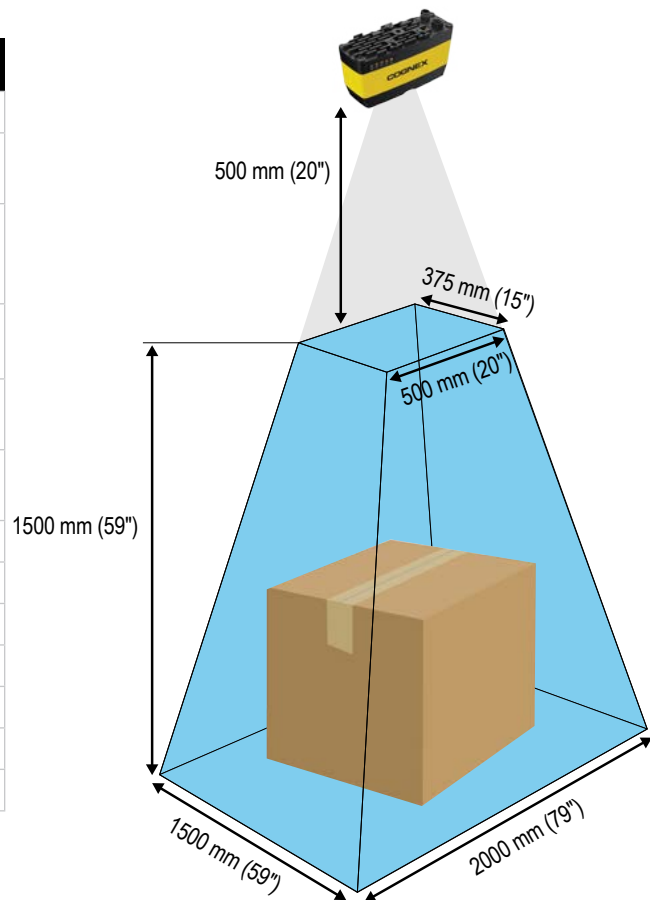
140 mm

75 mm

45 mm

SPECIFICATIONS

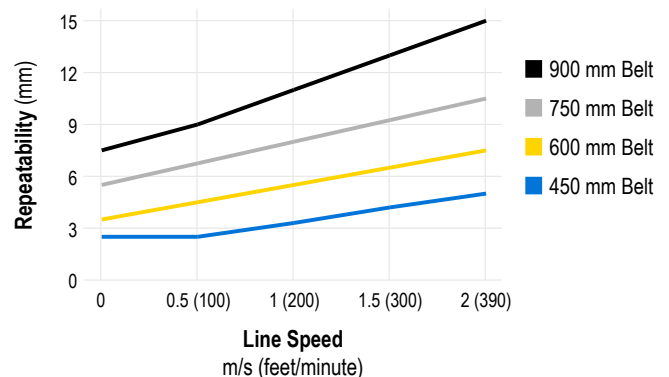
| | |
|-----------------------|--|
| Technologies | 3D Symbolic Light |
| Acquisition Rate | Up to 4 Hz (acquisition and on-board processing) |
| Trigger | Trigger input voltage limits: 24 VDC Input ON: >10 VDC (>6 mA) Input OFF: <2 VDC (<1.5 mA) |
| Power | Voltage: +24 VDC (22–26 VDC) Current: 5 A max |
| 2D Vision | 1280 x 960 resolution Modular external lighting & filter |
| Communication | GigE, TCP/IP, PROFINET, EtherNet/IP(TM), M/S |
| I/O | 2 fixed inputs, 2 fixed outputs |
| Operating Temperature | 0–40 °C (32–104 °F) |
| Storage Temperature | -10–60 °C (14–140 °F) |
| Operating Humidity | < 85% (non-condensing) |
| Weight | 485 g (17.1 oz) |
| Protection | IP65 |
| Certifications | CE, FCC, KCC, TUV SUD NRTL, RoHS |



| Belt Width | Min. Object (L x W x H) | Max. Object (L x W x H) | Typical Mounting Distance |
|------------------|--------------------------------------|---|---------------------------|
| 450 mm (17.7 in) | 25 x 25 x 10 mm (1.0 x 1.0 x 0.4 in) | 550 x 400 x 400 mm (21.6 x 15.7 x 15.7 in) | 1000 mm (39 in) |
| 600 mm (23.6 in) | 35 x 35 x 15 mm (1.4 x 1.4 x 0.6 in) | 750 x 550 x 550 mm (29.5 x 21.6 x 21.6 in) | 1350 mm (53 in) |
| 750 mm (29.5 in) | 45 x 45 x 20 mm (1.8 x 1.8 x 0.8 in) | 900 x 650 x 650 mm (35.4 x 25.6 x 25.6 in) | 1650 mm (65 in) |
| 900 mm (35.4 in) | 55 x 55 x 25 mm (2.1 x 2.1 x 1.0 in) | 1100 x 800 x 800 mm (43.3 x 31.5 x 31.5 in) | 2000 mm (78 in) |

Longer objects can be accommodated by increasing mounting distance.

Repeatability vs Line Speed (by Belt Width)



Repeatability specifications valid for +/-3σ on cooperative cuboidal objects.

COGNEX

Companies around the world rely on Cognex vision and barcode reading solutions to optimize quality, drive down costs and control traceability.

Corporate Headquarters One Vision Drive Natick, MA 01760 USA

Regional Sales Offices

Americas

North America +1 844-999-2469
Brazil +55 (11) 2626 7301
Mexico +01 800 733 4116

Europe

Austria +49 721 958 8052
Belgium +32 289 370 75
France +33 1 7654 9318
Germany +49 721 958 8052

Hungary +36 800 80291
Ireland +44 121 29 65 163
Italy +39 02 3057 8196
Netherlands +31 207 941 398
Poland +48 717 121 086
Spain +34 93 299 28 14
Sweden +46 21 14 55 88
Switzerland +41 445 788 877
Turkey +90 216 900 1696
United Kingdom +44 121 29 65 163

Asia

China +86 21 6208 1133
India +9120 4014 7840
Japan +81 3 5977 5400
Korea +82 2 539 9980
Malaysia +6019 916 5532
Singapore +65 632 55 700
Taiwan +886 3 578 0060
Thailand +66 88 7978924
Vietnam +84 2444 583358

© Copyright 2019, Cognex Corporation.

All information in this document is subject to change without notice. All Rights Reserved. Cognex and DataMan are registered trademarks of Cognex Corporation. Multi-Reader Sync is a trademark of Cognex Corporation. All other trademarks are property of their respective owners. Lit. No. 3DA1000DimDS-EN-03-2019

www.cognex.com