



TSPOT 4

COMPACT & HIGH POWERFUL SPOTLIGHT

▷ HIGH POWERFUL LIGHTING ▷ LED ILLUMINATION ▷ AUTONOMOUS AND COMPACT SPOT LIGHT ▷ CONFINED SPACES ▷ QUALITY CONTROL WITH CAMERA

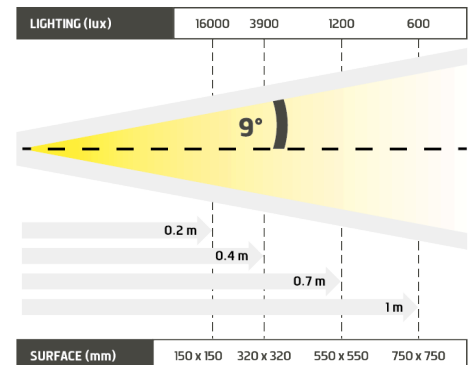
THE IDEAL SOLUTION FOR LIGHTING IN CONFINED SPACES.



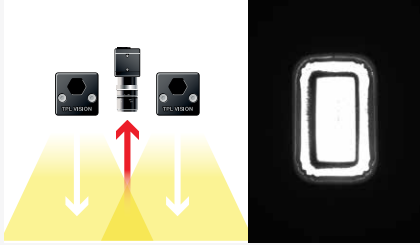
The TSPOT 4, highly powerful, is your camera's best partner to get an optimized control, in continuous or strobe mode. The TSPOT 4 is very easy to set up and quite autonomous, since it gets its own power supply with current control. Moreover, the fixing stirrup helps to orientate the lighting, in direct or darkfield ways. This spot is really appropriate whenever space is a real constraint. Either in directive intense lighting or in diffuse lighting, its 4 leds fit the highest paces of work.

Distance	0.2m		0.4m		0.7m		1m	
TSPOT4-WHl	16000 lux	150 x 150 mm	3900 lux	320 x 320 mm	1200 lux	550 x 550 mm	600 lux	750 x 750 mm

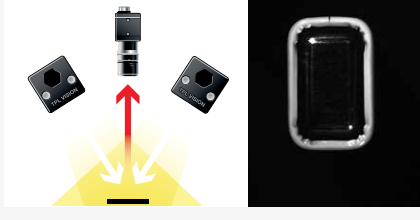
Minimum guaranteed values (white lighting measures)



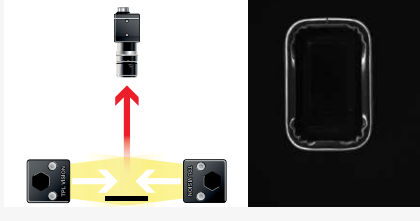
DIRECT LIGHTING



DIRECT INCLINED LIGHTING



DARKFIELD LIGHTING



TECHNICAL SPECIFICATIONS

Electronics	
Power supply	24 VDC \pm 10%
Functioning mode	Continuous or strobe according to wiring
Maximum rising time	1.5ms
Maximum falling time	1ms
Wiring	M12 4 poles male connector
Max. Consumption (W)	6
Optics	
Colour	White, Red, Green, Blue, Infrared
Number of Leds	4
Lens by default	\pm 9°
Mechanics	
Dimensions	38 x 30 x 28 mm
Weight (g)	150 g
Body materials	Black anodized Aluminum
Diffuser	Satin diffuser
Fixing	2 holes for CHC M3 screws (not provided)
Included add-ons	Fixing stirrup
Environment	
Operating temperature	0 - 40°C
Storage temperature	0 - 60°C
IP protection	IP 66
Labels	RoHS-CE-WEEE

ACCESSORIES

M12 female – 4 pins cable



2 meters	Ref: C-M12-4P-2M
5 meters	Ref: C-M12-4P-5M
10 meters	Ref: C-M12-4P-10M

Safety glasses



Ref: EYE-PROTECT

HOW TO BUILD YOUR REFERENCE

TSPOT4	REQUIRED SETTINGS		OPTION	
	COLOUR	OPTIC ANGLE	DIFFUSER OPTION	
WHI	<input type="checkbox"/>	9 \pm 9°	DS	SATIN
630	<input type="checkbox"/>	NL NO LENS	DO	OPAQUE
525	<input type="checkbox"/>		POL	POLARIZER*
470	<input type="checkbox"/>			
850	<input type="checkbox"/>			

* EXCEPT FOR INFRARED 850

EXAMPLES :
 TSPOT 4 WHITE LEDS \pm 9° SATIN DIFFUSER : TSPOT4-WHI-9-DS
 TSPOT 4 RED LEDS \pm 9° OPAQUE DIFFUSER : TSPOT4-630-9-DO
 TSPOT 4 BLUE LEDS NO LENS SATIN DIFFUSER : TSPOT4-470-NL-DS

RESULTS :
 TSPOT4-WHI-9-DS
 TSPOT4-630-9-DO
 TSPOT4-470-NL-DS

Features and presentations liable to modifications without prior notice. Ref.TS-040801-C2, 2019/12 Edition.

TPL VISION UK

Brenchley House - School Road - Charing - Kent TN27 0JW - UK
 Tel. +44 (0)1738 310 392 - contact@tpl-vision.co.uk

www.tpl-vision.com



Other available documents :

- PDF, DWG, DXF, IGS, STEP & X_Y DRAWINGS
- USER'S GUIDE

TSPOT 4

