



RF Management System 3

Comprehensive centralized tools to automate planning, deployment, security and management of your wireless LAN



FEATURES

802.11a/b/g/n

Supports virtually any wireless LAN deployment

3rd party monitoring

Supports device discovery, monitoring and up/down status for network infrastructure devices

Highly scalable

Supports thousands of infrastructure elements, providing support for the largest distributed enterprises as well as future proofing

Enhanced troubleshooting

Provides remote end-to-end testing and analysis of the wireless LAN as well as the wireless connection from the device to the wireless LAN

Take complete control of your wireless LAN...and more

RFMS 3 is a fully featured management solution designed to provide extraordinary network and security control throughout the complete lifecycle of your Motorola wireless LAN (WLAN) — from planning and deployment through day-to-day monitoring and troubleshooting. Part of Motorola's One Point Wireless Suite, this highly scalable tool enables end-to-end centralized management of thousands of wireless switch/controllers, thin access points (APs) and adaptive access points on any 802.11a/b/g/n wireless LAN. Tight integration with additional Motorola management solutions enable you to build out RFMS 3 to include centralized management of virtually every aspect of your enterprise mobility solution — from mobile devices and the data and applications resident on those devices to wireless broadband infrastructure and more. Deployment is faster and more accurate. Maximum performance is achieved the moment your system is powered on. Issues are identified and resolved more rapidly. As a result, WLAN availability is improved, while IT time and cost are reduced.

Design a superior WLAN with superior planning tools

SiteScanner, now tightly integrated into RFMS 3, provides a robust site survey tool that dramatically reduces planning, purchasing and implementation cycle times. SiteScanner enables users to quickly perform active and passive site surveys, validate infrastructure installs and identify interference. The SiteScanner bundle enables users to import CAD or any raster image into the RF Management Suite for determining RF coverage and channel overlap.

Rapid and cost-effective deployment

RFMS 3 simplifies end-to-end WLAN deployment — regardless of whether you have a single large location or many locations of any size around the world. A detailed build of materials (BOM) is automatically generated based on your final WLAN design, ensuring that the right products are re-purchased. The ability to automatically discover and configure all WLAN infrastructure improves deployment accuracy. And the ability to deploy thousands of devices from a single central remote location substantially reduces deployment time and cost.

Wi-Fi network planning suite

Identify and correct potential site problems in the planning stages, avoiding time-consuming and potentially costly re-work in network deployment

Comprehensive network map

Automatically generates a complete network view of wireless LAN infrastructure throughout the enterprise. Multi-view capabilities allow IT staff to understand how each device is connected on the LAN and the association patterns of wireless clients.

Mesh visualization

Delivers a comprehensive view of the mesh network to enable staff to monitor health and performance. Eases troubleshooting by identifying mesh link status and provides an accurate picture of the state of the mesh network.

Supports AutoCAD, PDF, JPEG and other common building or site map

Enables rapid creation of a reusable, extensible RF-intelligent model

Graphical display of over 200 network statistics

Visual data/ time trending is faster and easier to analyze, simplifying monitoring and troubleshooting

Wi-Fi network troubleshooting

Over 200 statistics displayed in a variety of reports help quickly identify and resolve issues with your Wi-Fi network

Virtualization

Supports VMware server and workstation installation, enabling efficient use of existing hardware resources

Ensure your WLAN is performing according to plan

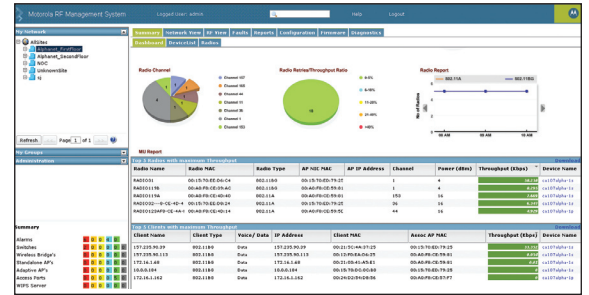
Your WLAN is deployed — but is it meeting the predicted performance levels dictated in your plan? RFMS 3 provides the tools you need to validate network performance post-deployment. An intuitive map-based interface allows you to quickly and easily calculate RF coverage, record live network data, and view an at-a-glance graphic visualization of data to ensure that your wireless applications and infrastructure are effectively deployed — and fully functional.

Easily monitor, update and troubleshoot your entire wireless LAN — from a single centralized location

Once your WLAN is up and running, a comprehensive set of management tools allows you to easily maintain peak WLAN performance. A centralized console provides the simplicity of a single-point-of-control for all of your wireless infrastructure — switch/controllers, thin access points and adaptive access points — without the need for local administration. Instant access to over 200 statistics allows administrators to easily, rapidly and accurately assess the health of the WLAN, enabling the immediate discovery, troubleshooting and correction of issues as they occur. At the click of a mouse, administrators can view historical KPIs, access point utilization, WLAN utilization, switch/controller diagnostics, and specific device statistics at the click of a mouse. Reports are easy to generate. And all network data can be exported to a CSV file for use in other management applications, providing the flexibility to continue to use any established reporting tools and processes.

Simplify and reduce the cost of asset management

Asset management can be a very time consuming and costly task. RFMS 3 can automatically keep track of all wireless LAN infrastructure, stripping time and cost out of your asset management function. At the press of a button, you can generate an instant report that provides the asset details for every switch/controller, thin access point and adaptive access point in your wireless LAN. The need for IT or other employees to waste time physically traveling to each piece of equipment to collect that information is eliminated. The total automation of asset inventory frees IT to focus on other more crucial business initiatives; significantly reduces the time and cost typically associated with manual inventory takes; and enables cost-effective compliance with government regulations, such as Sarbanes-Oxley.



With RF Management System 3, you can view the entire network from a single console.

Expand to manage every aspect of your enterprise mobility solution

RFMS 3 offers extraordinary expandability by providing a common platform that enables tight integration with Motorola's robust family of management tools. The result is the easy creation of a complete single command center that provides end-to-end granular control over virtually every aspect of your entire enterprise mobility solution — from planning, deployment and day-to-day management of the wireless LAN and wireless broadband infrastructure to staging and management of your mobile devices, mobile device application development and more. And web-based anywhere, anytime centralized control over your mobility solution brings a new level of simplicity to the mobility architecture, reducing management time and cost as well as maximizing uptime.

Single point of control for all wireless infrastructure — inside and outside the enterprise walls

RFMS 3 integrates tightly with Wireless Manager, another module in the Motorola One Point Wireless Suite, providing a single interface for management of all your Motorola wireless LAN and wireless broadband infrastructure. The result is a powerful unified solution that enables the management of all wireless infrastructure inside and outside the enterprise campus, including mesh, point-to-point and point-to-multipoint products — all from a single console. The expanded visibility provides the information needed to improve troubleshooting, issue resolution, performance and network availability.

Improve the security of your WLAN

With RFMS 3, enterprises can centrally define, manage and monitor the compliance of all security policies, ensuring consistent enforcement throughout all your locations. In addition, RFMS 3 tightly integrates with Motorola's Air Defense Wireless

Intrusion Protection System (IPS) adds 24x7x365 monitoring of the wireless LAN for unauthorized access and cost-effective regulatory compliance. Administrators have the tools needed to instantly spot hackers, attacks and system weak spots — as well as instantly terminate the connection to any rogue device. Wireless IPS helps enterprises effectively safeguard proprietary and customer information, providing compliance with HIPAA, PCI and other government regulations that require specific levels of protection for personal and financial information. And an optional Wireless IPS module, Advanced Troubleshooting, provides simple wizard-based tools for robust troubleshooting of the connection from the wireless device to the wireless network as well as the wireless network itself — virtually eliminating the need for onsite travel to identify and resolve wireless connectivity issues.

Get centralized control over all your mobile devices — all over the world

The ability to integrate RFMS with Motorola’s Mobility Services Platform 3 (MSP3) provides enterprises with complete and centralized control over mobile devices in addition to the wireless infrastructure — further maximizing mobile worker and IT staff productivity as well as mobile device uptime and utilization. Whether you have hundreds of devices in a local site or tens of thousands of mobile computers around the world in use inside

your four walls and out in the field, this scalable and extensible remote device management solution will provide out-of-the-box staging, keep devices loaded with the most current software — from applications to operating system — and enable 24x7x365 monitoring and rapid troubleshooting of device issues to keep users up, running and productive.

Maximize the value of your WLAN... with RFMS 3

When you choose RFMS 3, you choose superior value and a superior return on investment — this solution not only provides full control over your entire wireless LAN, but also offers the extensibility to provide granular control of your entire mobility solution. No local administration is required — initial configuration, ongoing provisioning and day-to-day management and issue resolution take place from a single centralized console. And Motorola’s full service packages provide the support you need to keep this mission-critical software running and up to date with the latest features and functionality — from product updates and electronic support information to around-the-clock access to technical support.

For more information on how Motorola’s RFMS 3 can help you get the most out of your WLAN, please visit us on the web at www.motorola.com/rfms or access our global contact directory at www.motorola.com/enterprisemobility/contactus

Automated asset management

Locate specific pieces of equipment quickly and easily; cost-effective and rapid on-demand access to a complete inventory of all WLAN infrastructure

Integrates with MSP 3

Enables comprehensive centralized control of mobile devices located anywhere in the world

Integrates with Wireless IPS

Enables immediate detection and termination of rogue devices; provides cost-effective compliance with government regulations

Integrates with Wireless Manager 2.0

Provides a complete network view of both indoor wireless LAN and outdoor wireless broadband infrastructure for flexible design and deployment

Comprehensive reporting and CSV export

Generate reports on key statistics such as network usage and performance and export to CSV for flexible data analysis

Flexible user roles

Administrators have full read/write access, and can create, modify, and delete projects; support personnel have read-only access to those tools necessary for support and troubleshooting functions.

Site management

Limit RFMS users to specific sites as well as specific devices within a site; provide customized views that focus on the assigned site and specific assigned devices

Configuration compliance

Ensures configurations of all wireless infrastructure remain in compliance and alerts administrators of any changes to device configuration

RF Management System 3 Specifications

System Requirements

Processor:	Dual Core 2 Duo/3GHz or better
RAM:	4.0 GB RAM
Operating System:	Microsoft® Windows® Server 2003 SP1 or later
Hard Disk:	80GB of available hard-disk space
Web Browsers:	FireFox 2.0 and 3.0; Internet Explorer 6 and 7
Virtualization:	VMware server and workstation support
Views:	Summary Dashboard, Alarms, Network View, Reporting, Notification, Groups, WIPS management, and Administration

Supported Infrastructure

Wireless Switches:	WS2000; WS5100; RFS6000 and RFS7000
Access Points:	AP5131; AP5181; AP7131; AP100; AP300; AP4131 (adopted as a port); Adopted AP5131 (Adaptive Mode); Adopted AP5181 (Adaptive Mode)
Wired Switches and Client Bridges:	ES3000; CB3000 and HP ProCurve 2626 PWR

Part Numbers

RServer Software:	SW-RFMS-SRV-050-WW
License Packs:	1 AP — RFMS-AP-SW-1-WW 5 APs — RFMS-AP-SW-5-WW 25 APs — RFMS-AP-SW-25-WW 50 APs — RFMS-AP-SW-50-WW 100 APs — RFMS-AP-SW-100-WW 250 APs — RFMS-AP-SW-250-WW 500 APs — RFMS-AP-SW-500-WW 2000 APs — RFMS-AP-SW-2000-WW 5000 APs — RFMS-AP-SW-5000-WW

SPECIFICATION SHEET

RF MANAGEMENT SYSTEM 3

Comprehensive centralized tools to automate planning, deployment, security and management of your wireless LAN



MOTOROLA

motorola.com

Part number SS-RFMS3. Printed in USA 09/09. MOTOROLA and the Stylized M Logo are registered in the US Patent & Trademark Office. All other product or service names are the property of their respective owners. ©2009 Motorola, Inc. All rights reserved. For system, product or services availability and specific information within your country, please contact your local Motorola office or Business Partner. Specifications are subject to change without notice.